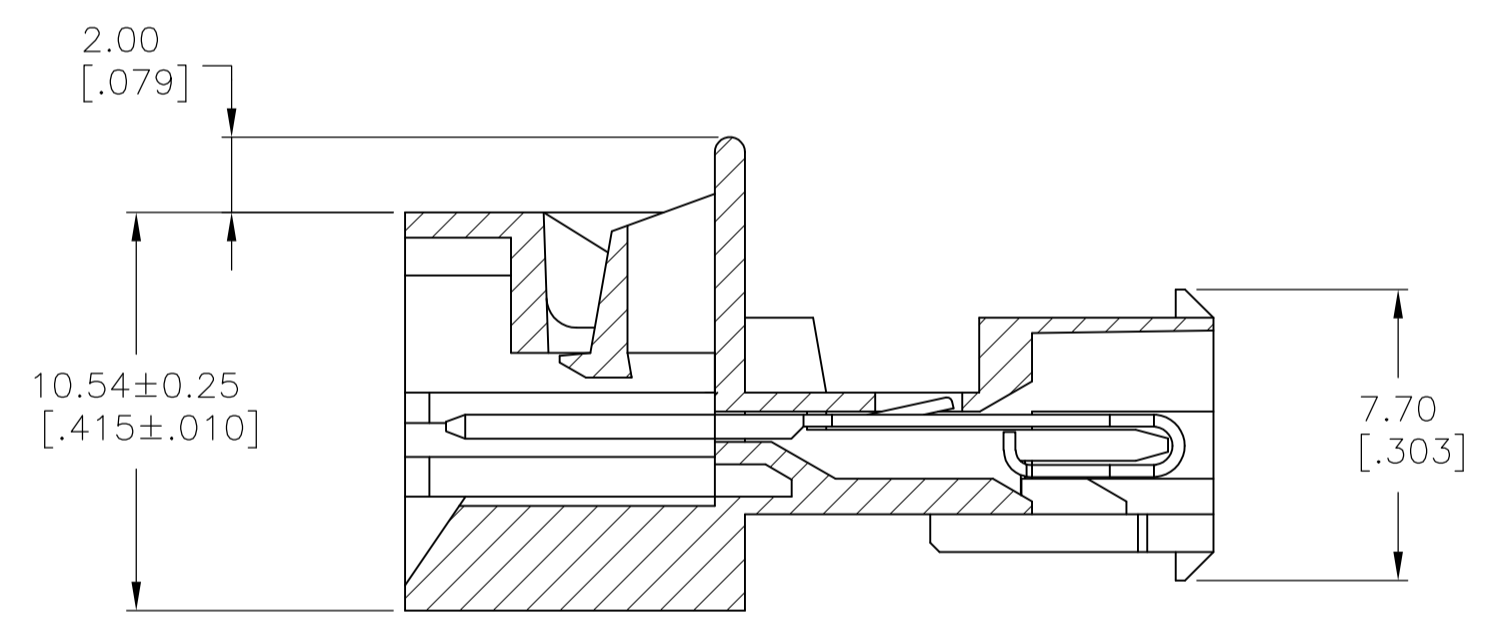
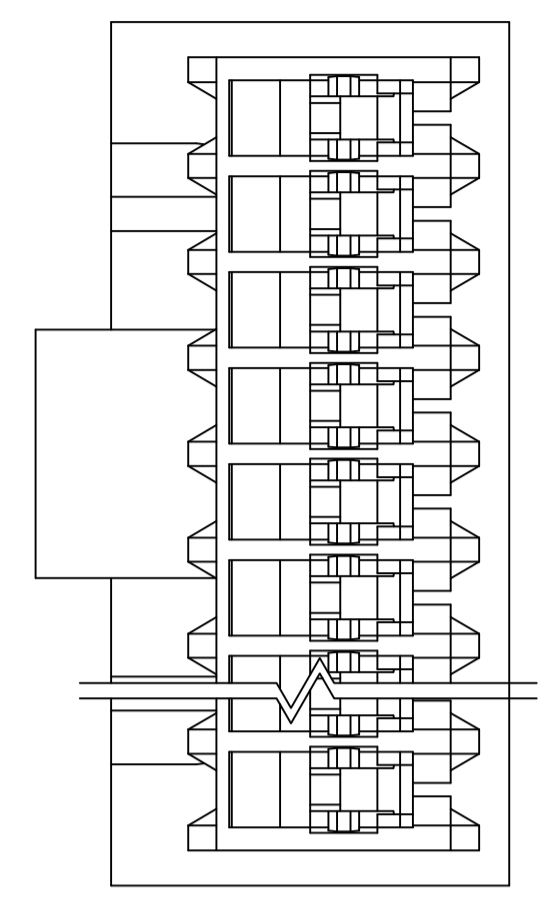
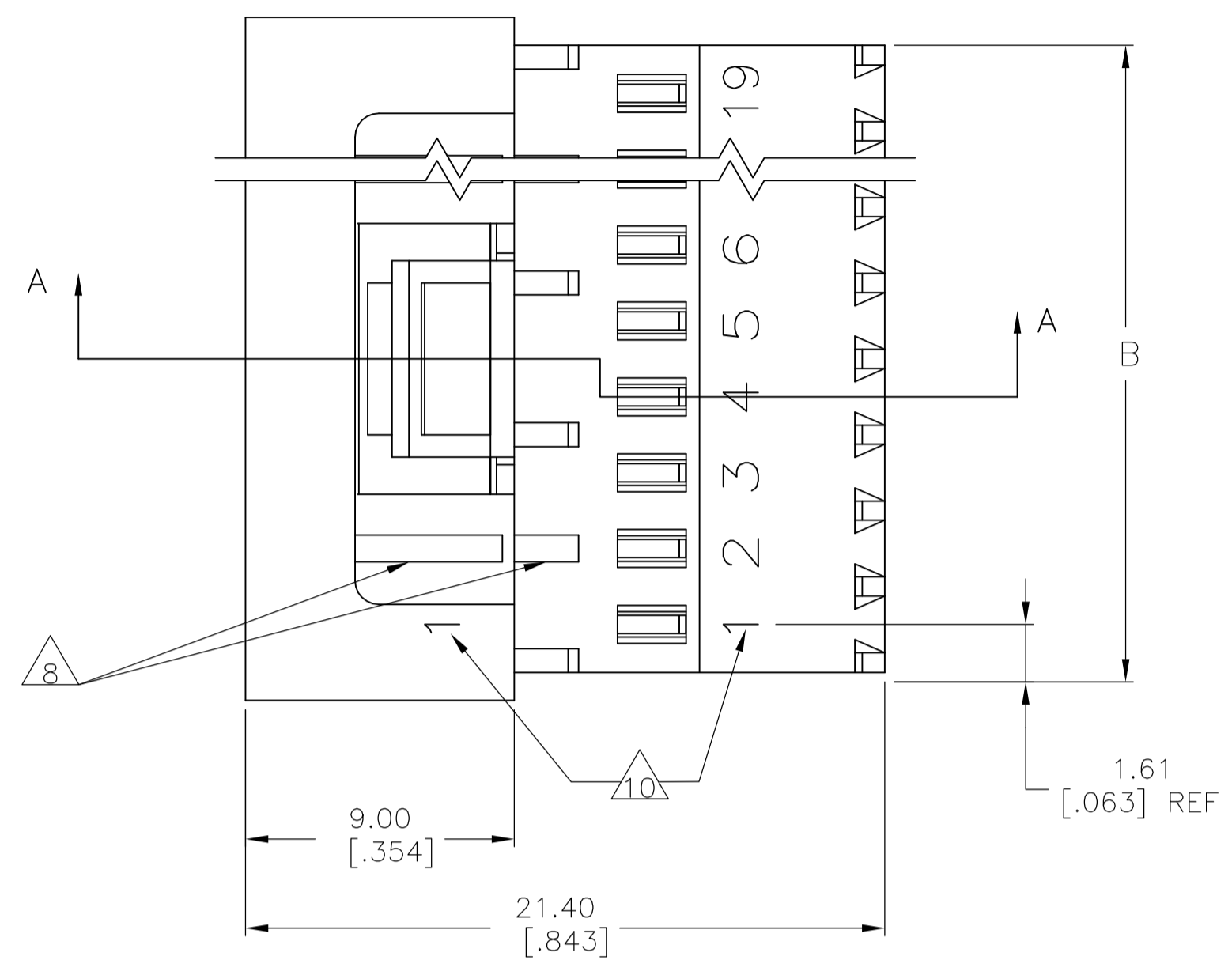
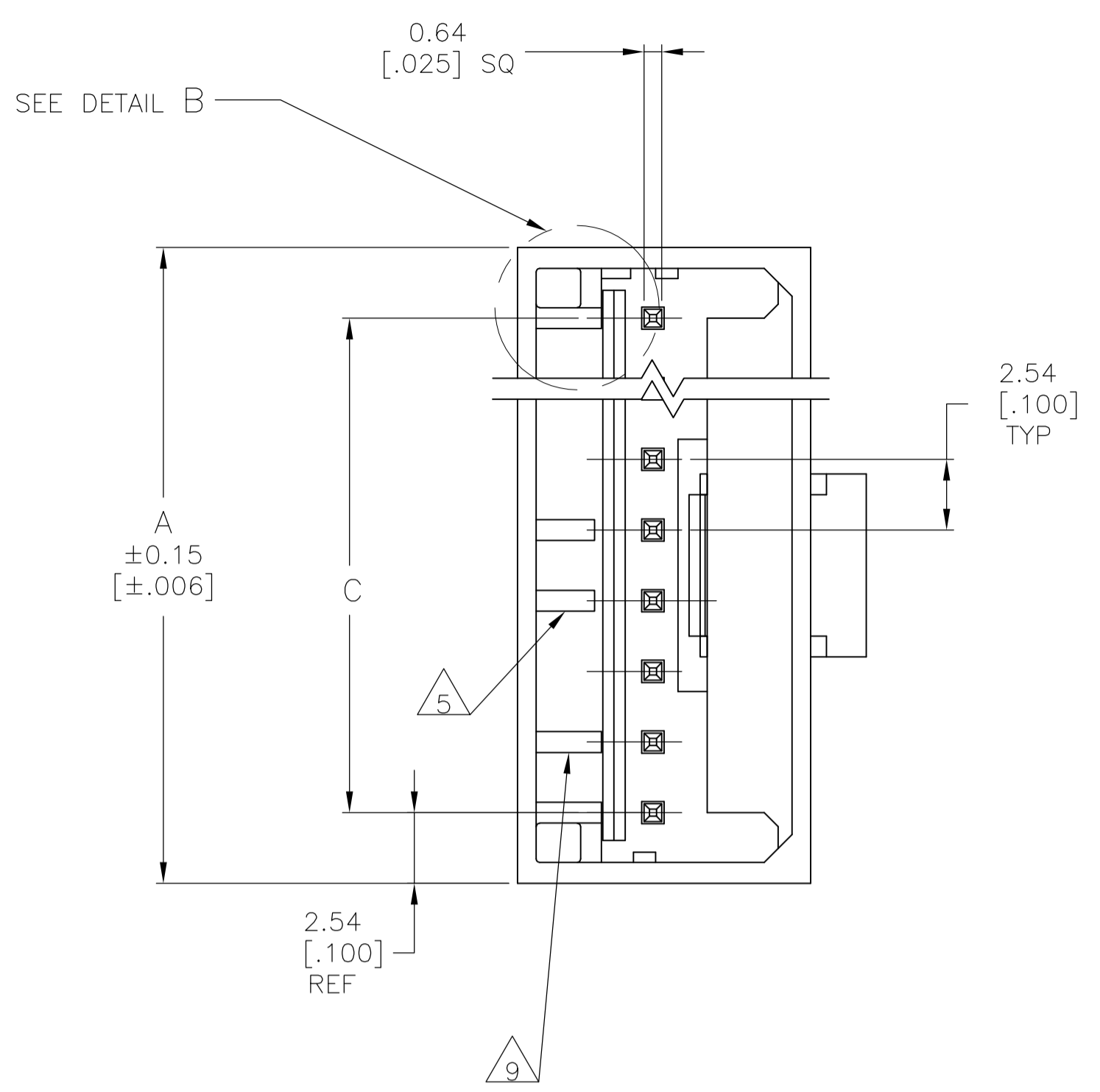
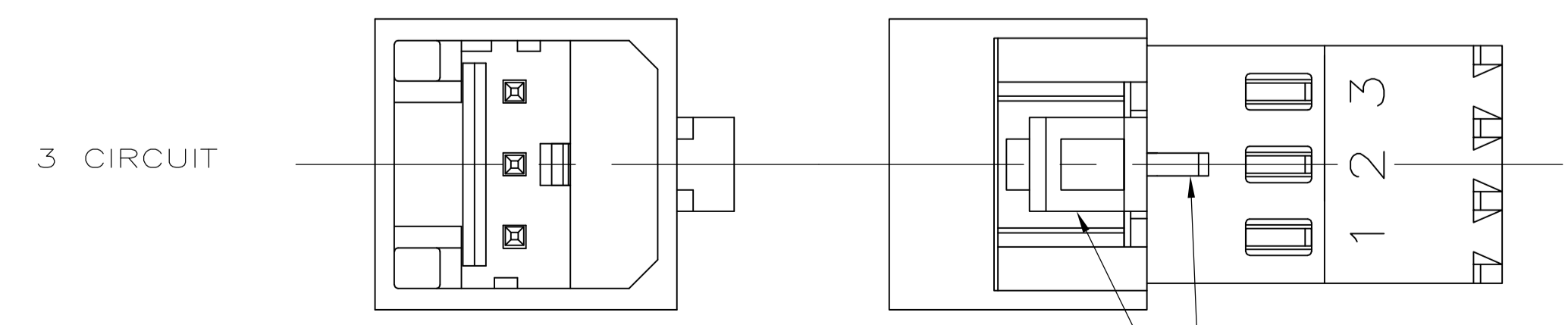
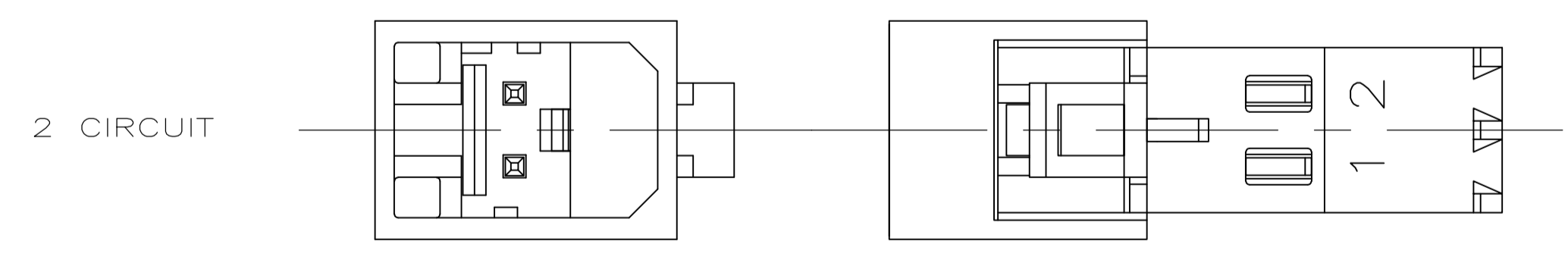


LOC		DIST		REVISIONS			
CM	00	REV	DATE	BY	APP'D	REV	DATE
D1		REVISED PER ECO-08-013568	02JUN08	HMR	DB		



SECTION A-A



DETAIL A

DETAIL B  
 SCALE 10:1  
 ALTERNATE CONFIGURATION

- 1 MATERIAL:  
 HOUSING- NYLON UL94V-2 (RED).  
 CONTACTS- 0.30 [.012] THK COPPER ALLOY  
 DUAL PLATING : GOLD .00076[.000030] MIN THK  
 ONPOST, BRIGHT TIN-LEAD 0.00203[.000080] MIN  
 THK 647008-2 THRU 1-647008-9 OR MATTE TIN  
 0.00203[.000080] MIN THK. FOR 3-647008-2 THRU  
 4-647008-9 ON WIRE SLOT, WITH NICKEL UNDERPLATE  
 .00127[.000050] MIN THK ALL OVER.
- 2 CONTACTS ACCEPT 22 AWG (0.3 - 0.4 mm<sup>2</sup>) TIN PLATED  
 SOLID, CONCENTRIC FUSED STRANDED, OR  
 CONCENTRIC STRANDED (7 AND 19 STRAND) WIRE  
 WITH 1.52 [.060] MAX INSULATION DIAMETER.
- 3 MATES WITH STANDARD MTA-100 CONNECTORS:  
 OF THE SAME CIRCUIT SIZES  
 WITH SIMILARLY PLATED CONTACTS  
 WITH POLARIZING TABS-CIRCUIT SIZES 4-19 ONLY  
 WITHOUT POLARIZING TABS-CIRCUIT SIZES 2 & 3.  
  
 DOES NOT MATE WITH MTA-100 CONNECTORS:  
 WITH POLARIZING TABS-CIRCUIT SIZES 2 & 3 ONLY.  
 (SEE DETAIL A)  
 WITH BLOCKED CIRCUITS -ALL CIRCUIT SIZES.  
 NOT RECOMMENDED FOR MATING WITH MTA-100  
 CONNECTOR WITHOUT POLARIZING TABS.  
 CIRCUIT SIZES 4-19.
- 4 ACCESSORIES:  
 REPLACEMENT IDC CONTACTS: 647030-2.  
 COVERS: SEE TABLE
- 5 QUANTITY OF CENTRALLY POSITIONED RAILS  
 VARIES WITH CIRCUIT SIZE. (SEE TABLE)  
 LOCATION MAY DIFFER FROM EXAMPLE SHOWN.
- 6 DIMENSIONS IN BRACKETS ARE IN INCHES.
- 7 SIMILAR SIZED LOCK AND SINGLE TAB USED  
 OR CIRCUITS 4 & 5.
- 8 QUANTITY OF GUSSET RIBS VARIES WITH  
 CIRCUIT SIZE (SEE TABLE).  
 LOCATION MAY DIFFER FROM EXAMPLE SHOWN.
- 9 INNER END RAIL PAIR NOT PRESENT FOR  
 CIRCUIT SIZES 2 OR 3.
- 10 CIRCUIT ID MAY APPEAR FULLY NUMBERED OR SHOWING  
 LOCATION 1 ONLY DEPENDING ON CIRCUIT SIZE.

THIS DRAWING IS A CONTROLLED DOCUMENT.		DWG R. LEWIS 30--98	Tyco Electronics Corporation Harrisburg, Pa 17105-3608
DIMENSIONS: mm [INCHES]		CHK R. SWING 30--98	
TOLERANCES UNLESS OTHERWISE SPECIFIED:		APP'D J. FILLIS 30--98	NAME MTA-100 POSTED CONNECTOR ASSEMBLY, CLOSED END, 22 AWG
0 PLC ± -	1 PLC ± -	PRODUCT SPEC	
2 PLC ± 0.20 [.007]	3 PLC ± -	APPLICATION SPEC	
4 PLC ± -	ANGLES ± -	SIZE	A1
MATERIAL	FINISH	CAGE CODE	00779
		DRAWING NO	647008
		RESTRICTED TO	
		WEIGHT	-
		CUSTOMER DRAWING	
		SCALE	5:1
		SHEET	1 OF 2
		REV	D1

METRIC

QTY OF GUSSET RIBS	QTY OF CENTRAL RAILS	MM	IN	MM	IN	MM	IN	NO. OF CIRCUITS	PART NO
4	2	45.72	1.800	48.95	1.927	50.80	2.000	19	4-647008-9
4	2	43.18	1.700	46.41	1.827	48.26	1.900	18	4-647008-8
4	2	40.64	1.600	43.86	1.727	45.72	1.800	17	4-647008-7
4	2	38.10	1.500	41.32	1.627	43.18	1.700	16	4-647008-6
4	2	35.56	1.400	38.78	1.527	40.64	1.600	15	4-647008-5
4	2	33.02	1.300	36.24	1.427	38.10	1.500	14	4-647008-4
4	2	30.48	1.200	33.70	1.327	35.56	1.400	13	4-647008-3
2	1	27.94	1.100	31.16	1.227	33.02	1.300	12	4-647008-2
2	1	25.40	1.000	28.62	1.127	30.48	1.200	11	4-647008-1
2	1	22.86	.900	26.08	1.027	27.94	1.100	10	4-647008-0
2	1	20.32	.800	23.54	.927	25.40	1.000	9	3-647008-9
2	0	17.78	.700	21.00	.827	22.86	.900	8	3-647008-8
0	0	15.24	.600	18.46	.727	20.32	.800	7	3-647008-7
0	0	12.70	.500	15.92	.627	17.78	.700	6	3-647008-6
0	0	10.16	.400	13.38	.527	15.24	.600	5	3-647008-5
0	0	7.62	.300	10.84	.427	12.70	.500	4	3-647008-4
0	0	5.08	.200	8.30	.327	10.16	.400	3	3-647008-3
0	0	2.54	.100	5.76	.227	7.62	.300	2	3-647008-2
4	2	45.72	1.800	48.95	1.927	50.80	2.000	19	1-647008-9
4	2	43.18	1.700	46.41	1.827	48.26	1.900	18	1-647008-8
4	2	40.64	1.600	43.86	1.727	45.72	1.800	17	1-647008-7
4	2	38.10	1.500	41.32	1.627	43.18	1.700	16	1-647008-6
4	2	35.56	1.400	38.78	1.527	40.64	1.600	15	1-647008-5
4	2	33.02	1.300	36.24	1.427	38.10	1.500	14	1-647008-4
4	2	30.48	1.200	33.70	1.327	35.56	1.400	13	1-647008-3
2	1	27.94	1.100	31.16	1.227	33.02	1.300	12	1-647008-2
2	1	25.40	1.000	28.62	1.127	30.48	1.200	11	1-647008-1
2	1	22.86	.900	26.08	1.027	27.94	1.100	10	1-647008-0
2	1	20.32	.800	23.54	.927	25.40	1.000	9	647008-9
2	0	17.78	.700	21.00	.827	22.86	.900	8	647008-8
0	0	15.24	.600	18.46	.727	20.32	.800	7	647008-7
0	0	12.70	.500	15.92	.627	17.78	.700	6	647008-6
0	0	10.16	.400	13.38	.527	15.24	.600	5	647008-5
0	0	7.62	.300	10.84	.427	12.70	.500	4	647008-4
0	0	5.08	.200	8.30	.327	10.16	.400	3	647008-3
0	0	2.54	.100	5.76	.227	7.62	.300	2	647008-2
DUST COVER	STRAIN RELIEF COVERS								
4	ACCESSORIES								

THIS DRAWING IS A CONTROLLED DOCUMENT.

DIN 30-98	30-98	Tyco Electronics Corporation
DRK R SWING	30-98	Harrisburg, Pa 17105-3608
APVD J. ELLIS	30-98	NAME
PRODUCT SPEC		MTA-100 POSTED CONNECTOR ASSEMBLY, CLOSED END, 22 AWG
APPLICATION SPEC		SIZE
		CAGE CODE
		DRAWING NO
		WEIGHT
		SCALE
		SHEET
		REV

MATERIAL: FINISH:

Customer Drawing

METRIC